

# Giornata ticinese per la vendita di bovine di razza bruna

*Giornata ticinese per la vendita di bovine di razza bruna*



**Lunedì 1 maggio 2023, dalle 9.00**

**Presso l'esposizione zootecnica di Pian Castro**

**BRAUNVIEH**





## DLC in 2<sup>a</sup> lattazione e segg.

*«Più punti in 2<sup>a</sup> DLC e segg.,  
un plusvalore per vacca e allevatore.»*

- ✓ tiene conto dello sviluppo del suo animale e profitta del plusvalore
- ✓ sfrutta la possibilità di aumentare il valore dei discendenti
- ✓ utilizza la considerazione della DLC in 2<sup>a</sup> lattazione e segg. nella stima dei valori genetici

**Braunvieh Schweiz**  
Chamerstrasse 56  
CH-6300 Zugo  
Tel. 041 729 33 11  
[www.braunvieh.ch](http://www.braunvieh.ch)

**BRAUNVIEH** 

### 1 SELMA CH 120.1485.5611.4

data nasc.: 02.01.20 parto: 11.10.22 cop. 20.02.23 X-HANK-ET CH 120.1625.9108.5 X DLC 86-79-81/84-80/83 1.L

<b>Superbrown Kiba SUPERSTAR</b> IT 14990127961.0 G 99% +568 +26 +0.04 +36 +0.22  Tö 1693 MIW: 130 FIW: 101 GZW: 1237 WZW: 108 FW: 94 Pers. 105 ZZ 99 ND 100 Kasein AB	<b>BLOOMING-ET</b> CH 120.0825.6880.8 3-3-2/83 Z G 99% +449 +11 -0.10 +29 +0.18 MIW: 122 GZW: 1140 WZW: 97 FW: 94  <b>NOA-ET</b> IT 14990107960.9 DLC IT 87 84 85 88 VG87 Ø 2L 11280 kg 3.95 % 3.60 % MIW: 115 GZW: 1161
<b>Buchsbaum Vigor VALETTA</b> CH 120.0794.4878.6 *2DL DLC 88-80-92/94-87/90 3.L  Ø 9L 7163 4.18 3.60 81 LP 88 BD CH 68% -404 -4 +0.18 -4 +0.14 Pers: 100 ZZ: 111 MIW: 96 GZW: 1068	<b>VIGOR-ET</b> US 195618.4 G 99% +139 +0 -0.08 +4 -0.01 MIW: 103 GZW: 1074 WZW: 107 FW: 100  <b>KISHA</b> CH 120.0413.1913.7 * DLC 83-81-83/85-81/83 1.L Ø 7L 6227 kg 3.96 % 3.46 % 72 LP 69 BD MIW: 86 GZW: 1000

**BS23/CH 04.23 48% +59 +12 +0.13 +15 +0.18 MIW: 112 GZW: 1182 FW: 96 ultima pesa:11.04.23 24.3 kg 4.36% 3.8%**

**CH Ext. 04.23 47% GN 110 Ra 112 Be 78 Fu 111 Eu 117**

**ZZ 11**

Produzione iniziale: 23.2kg 4.23% 3.60% ZZ 57

Allevatore + Prop.: Blättler Daniel, Schachen 1, 6052 Hergiswil NW

### 2 AMIRA CH 120.1558.9369.1

data nasc.: 05.01.21 parto: 18.02.23 DLC 83-85-82/84-84/83 1.L

<b>Superbrown ARROW</b> IT 21002045985.3 G 99% +99 +17 +0.18 +20 +0.23  Tö 1774 MIW: 117 FIW: 93 GZW: 1082 WZW: 101 FW: 96 Pers. 97 ZZ 101 ND 100 Kasein BB	<b>ANIBAL-ET</b> CH 120.0830.2516.4 5-4-4/92 G 99% +382 +20 +0.06 +17 +0.05 MIW: 116 GZW: 1167 WZW: 111 FW: 97  <b>BELINDA</b> IT 21001903716.1 * DLC IT 89 88 89 91 EX90 Ø 5L 9084 kg 4.46 % 3.71 % MIW: 89 GZW: 960
<b>BERTA</b> CH 120.1333.3369.0 DLC 85-85-84/90-85/86 2.L  Ø 1L 305 5196 4.10 3.62 79 LP 92 BD CH 58% -668 -14 +0.19 -9 +0.21 Pers: 102 ZZ: 108 MIW: 90 GZW: 1023	<b>LENNOX</b> CH 120.1197.0288.5 2-2-3/82 G 99% -306 +17 +0.42 +8 +0.26 MIW: 108 GZW: 1086 WZW: 101 FW: 72  <b>BAVONA</b> CH 120.1227.1095.2 DLC 93-90-91/97-90/93 3.L Ø 4L 8558 kg 3.46 % 3.28 % 103 LP 92 BD MIW: 88 GZW: 1044

**BS23/A 04.23 39% -285 +2 +0.19 +6 +0.22 MIW: 104 GZW: 1068 FW: 90 ultima pesa:05.04.23 24.3 kg 3.68% 3.26%**

**A Ext. 04.23 37% GN 115 Ra 112 Be 113 Fu 113 Eu 118**

**ZZ 64**

Ø 2 controllati: 21.5kg 3.70% 3.28% ZZ 79

Allevatore + Eig.: Briker Michi, Unteraxen 1, 6452 Sisikon

### 3 BLENA CH 120.1482.8590.8

data nasc.: 20.01.20 parto: 22.09.22 cop. 13.03.23 ARAL CH 120.1239.5250.4 DLC 77-81-76/84-78/79 1.L

<b>Alpview Fact COSMOS-ET</b> CH 120.1362.1531.3 G 83% +48 +4 +0.03 +11 +0.12  Tö 46 MIW: 108 FIW: 121 GZW: 1223 WZW: 126 FW: 92 Pers. 111 ZZ 121 ND 115 3-2-2/82 Kasein BB	<b>FACT-ET</b> CH 120.1127.4206.2 3-3-2/83 G 99% +921 +15 -0.29 +27 -0.07 MIW: 123 GZW: 1381 WZW: 134 FW: 92  <b>KAARONA-ET</b> CH 120.0526.1482.5 F*DL DLC 86-90-91/91-88/89 6.L Ø 6L 7838 kg 4.32 % 3.70 % 84 LP 92 BD MIW: 105 GZW: 1116
<b>BEROCCA</b> CH 120.1091.6653.6 * DLC 91-90-93/95-95/93 4.L  Ø 5L 7332 3.37 3.21 89 LP 75 BD CH 68% +412 +3 -0.18 +12 -0.03 Pers: 99 ZZ: 100 MIW: 109 GZW: 1110	<b>TARO</b> CH 120.0930.1879.8 3-2-3/83 G 94% +879 +16 -0.26 +17 -0.18 MIW: 116 GZW: 1183 WZW: 115 FW: 93  <b>BAZOCA</b> CH 120.0679.6011.5 *DL DLC 94-83-90/95-88/92 3.L Ø 5L 6460 kg 4.05 % 3.61 % 79 LP 74 BD MIW: 95 GZW: 1003

**BS23/CH 04.23 45% +252 -2 -0.17 +9 +0.00 MIW: 106 GZW: 1141 FW: 95 ultima pesa:11.04.23 20.2 kg 3.35% 3.38%**

**CH Ext. 04.23 42% GN 101 Ra 93 Be 103 Fu 92 Eu 112**

**ZZ 39**

1. Lakt 2.08 218 Tage 4332kg 3.35 % 3.09 % 82 BD AT4 ZZ 33

Allevatore + Prop.: Hurschler-Waser Arnold, Oberbergstrasse 120, 6390 Engelberg

**4 Taler's Bender HANNA CH 120.1503.9658.6**data nasc.: 07.08.19 parto: 07.12.22 cop. 25.01.23 **HANS CH 120.1567.2200.6** DLC 87-82-81/85-86/84 1.L

<b>P.Livello Bive Pays BENDER-ET</b> IT 34990885777.8 G 99% +803 +29 -0.04 +38 +0.13	<b>BIVER</b> CH 120.0942.9007.0 5-5-5/95 G 99% +370 +29 +0.19 +29 +0.22 MIW: 125 GZW: 1119 WZW: 95 FW: 94
Tö 2007 MIW: 132 FIW: 96 GZW: 1222 WZW: 100 FW: 68 Pers. 106 ZZ 104 ND 104 Kasein BB	<b>DALILA</b> IT 34990587693.2 DLC IT 91 92 90 91 EX91 Ø 3L 9074 kg 3.88 % 3.54 % MIW: 101 GZW: 1022
Taler's Alino HOLIDAY CH 120.1249.2048.9 DLC 82-80-81/81-83/81 1.L Ø 4L 7688 4.02 3.43 91 LP 92 BD CH 66% -348 -7 +0.10 -16 -0.06 Pers: 82 ZZ: 77 MIW: 87 GZW: 888	<b>ALINO</b> CH 120.0677.5320.5 3-3/83 G 99% +52 +7 +0.07 -7 -0.12 MIW: 97 GZW: 1046 WZW: 103 FW: 75
	<b>HELEN-ET</b> CH 120.0748.1202.5 *DL DLC 91-92-84/93-91/90 3.L Ø 5L 7507 kg 4.51 % 3.76 % 89 LP 92 BD MIW: 89 GZW: 870

**BS23/CH 04.23 54% +117 +13 +0.11 +11 +0.10 MIW: 110 GZW: 1069 FW: 78 ultima pesa:02.04.23 27.9 kg 4.12% 3.17%****CH Ext. 04.23 46% GN 112 Ra 117 Be 112 Fu 101 Eu 115 ZZ 10**

1C 6 2.05 290 Tage 7209kg 4.22 % 3.43 % 105 LP 95 BD AT4 ZZ 67

Proprietario: Peter Albert, Hauptstrasse 30a, 9464 Lienz

Allevatore: Käslin Markus, Tal 1, 6375 Beckenried

**5 Fontana Top TI Norwin GIUDITH CH 120.1377.2800.3**data nasc.: 21.08.18 parto:19.10.22 cop.03.01.23 **X-DOBRY BYK-ET CH 120.1150.0452.5 X** DLC 81-80-79/83-80/81 1.L

<b>NORWIN</b> CH 120.0810.8209.1 G 99% +522 +13 -0.11 +15 -0.04	<b>NESTA</b> IT 24000366344.1 G 99% +52 -8 -0.14 +8 +0.09 MIW: 104 GZW: 1016 WZW: 102 FW: 96
Tö 4303 MIW: 113 FIW: 85 GZW: 1003 WZW: 92 FW: 87 Pers. 107 ZZ 100 ND 98 5-5-5/95 Kasein AB	<b>DUBAI</b> CH 120.0336.0042.7 *2DL DLC 87-86/89-87/87 2.L Ø 7L 9814 kg 3.67 % 3.35 % 111 LP 93 BD MIW: 109 GZW: 1038
Fontana Top TI Genox-B GIORGIA CH 120.1185.0573.9 DLC 94-91-87/93-91/91 4.L Ø 3L 9869 4.28 3.49 123 LP 110 BD CH 65% +484 +34 +0.19 +15 -0.02 Pers: 98 ZZ: 104 MIW: 117 GZW: 1134	<b>GENOX-BOY</b> CH 120.0794.8936.9 5-5-5/96 G 99% +172 +8 +0.02 +5 -0.01 MIW: 105 GZW: 1004 WZW: 94 FW: 91
	<b>GRACE</b> CH 120.0984.4741.8 DLC 89-86-90/93-91/90 3.L Ø 4L 9634 kg 3.82 % 3.48 % 117 LP 108 BD MIW: 106 GZW: 1083

**BS23/G 04.23 70% +601 +15 -0.13 +15 -0.07 MIW: 114 GZW: 1104 FW: 90 ultima pesa:02.04.23 32.9 kg 3.83% 2.96%****G Ext. 04.23 62% GN 108 Ra 105 Be 101 Fu 106 Eu 113 Kasein BB ZZ 19**

1A 8 3.01 168 Tage 5656kg 4.08 % 3.34 % 118 LP 115 BD AT4 ZZ 37

Proprietario: Peter Albert, Hauptstrasse 30a, 9464 Lienz

Allevatore: Fontana Giuseppe, Strada di Boll 43, 6773 Prato (Leventina)

**6 GS Alliance Nello NELLA CH 120.1497.9606.9**data nasc.: 18.06.20 parto: 03.11.22 cop. 29.01.23 **X-BINIAM CH 120.1553.5503.8 X** DLC

<b>Pleisch's Nelgor NELLO</b> CH 120.1005.4016.8 G 99% +367 +11 -0.05 +16 +0.04	<b>NELGOR</b> CH 120.0552.7031.8 3-2/82 G 99% +753 +11 -0.26 +18 -0.11 MIW: 116 GZW: 1151 WZW: 109 FW: 100
Tö 900 MIW: 113 FIW: 99 GZW: 1110 WZW: 106 FW: 107 Pers. 98 ZZ 105 ND 106 3-3-3/83 Kasein BB	<b>VALENZIA</b> CH 120.0724.1177.0 DLC 92-88-92/92-92/92 4.L Ø 4L 7259 kg 3.84 % 3.54 % 87 LP 95 BD MIW: 95 GZW: 1020
S Bro Glenn ALANA-ET CH 120.1288.2743.2 Kasein BB DLC 85-82-80/83-86/83 1.L Ø 2L 9346 4.42 3.63 117 LP 106 BD G 74% +406 +20 +0.05 +18 +0.06 Pers: 93 ZZ: 91 MIW: 117 GZW: 1088	<b>GLENN-ET</b> CH 120.0236.6446.0 3-4/86 G 99% +57 +12 +0.14 +12 +0.14 MIW: 110 GZW: 1007 WZW: 87 FW: 97
	<b>ASHTON</b> CH 120.0800.8222.1 DLC 91-90-90/91-87/90 2.L Ø 3L 9417 kg 4.73 % 3.31 % 111 LP 105 BD MIW: 109 GZW: 1061

**BS23/CH 04.23 45% +314 +17 +0.06 +16 +0.07 MIW: 114 GZW: 1110 FW: 100 ultima pesa:02.04.23 28.2 kg 4.27% 3.21%****A Ext. 04.23 41% GN 109 Ra 112 Be 100 Fu 104 Eu 111 ZZ 103**

Produzione iniziale: 27.4kg 4.05% 3.25% ZZ 31

Proprietario: Peter Albert, Hauptstrasse 30a, 9464 Lienz

Allevatore: GS Alliance, Riedisfeld 3, 6463 Bürglen UR

**7 KAMILA AT 944670869.1**data nasc.: 31.01.20 parto: 01.11.22 cop. 27.01.23 **HANS CH 120.1567.2200.6** DLC 83-85-86/82-83/83 1.L

<b>Brown Heaven R FAMOUS-ET</b> CA 109109715.2 GI 85% +669 +3 -0.32 +10 -0.18 Tö 304 MIW: 109 FIW: 97 GZW: 1034 WZW: 91 FW: 92 Pers. 101 ZZ 98 ND 101	<b>RICHARD-ET</b> US 68155420.5 GI 85% +856 -1 -0.46 +12 -0.24 MIW: 110 GZW: 1054 WZW: 100 FW: 89 <b>FANTASY</b> CA 106157091.3 DLC CA 97-95-97-97 EX 97 Ø 3L 11851 kg 4.17 % 3.51 % MIW: 107 GZW: 1006
<b>KARIN</b> AT 827317438.9 Ø 1L 305 6841 3.64 3.45 I 47% +412 +13 -0.05 +11 -0.04 Pers: 108 ZZ: 100 MIW: 111 GZW: 1046	<b>ASSAY-ET</b> DE 815702962.3 G 98% +843 +42 +0.10 +28 -0.02 MIW: 128 GZW: 1130 WZW: 102 FW: 101 <b>KENIA</b> AT 299817729.8 MIW: 97 GZW: 989

**BS23/CH 04.23 39% +642 +10 -0.21 +15 -0.10 MIW: 113 GZW: 1069 FW: 98 ultima pesa:02.04.23 28.8 kg 3.7% 3.05%****CH Ext. 04.23 30% GN 107 Ra 110 Be 107 Fu 110 Eu 104****ZZ 134**

Produzione iniziale: 33kg 3.70% 3.30% ZZ 37

Proprietario: Peter Albert, Hauptstrasse 30a, 9464 Lienz

Allevatore: Frick Erich, Müsinerstrasse 2, 6832 Sulz

**8 Scoglio Top TI Frost HOLLYWOOD CH 120.1502.1635.8**data nasc.: 27.11.19 parto: 09.10.22 cop. 23.11.22 **ARAL CH 120.1239.5250.4** DLC 83-78-84/83-84/83 1.L

<b>Studer's BS Fact FROSTY-ET</b> CH 120.1373.2486.1 G 88% -144 +9 +0.21 +13 +0.26 Tö 81 MIW: 110 FIW: 121 GZW: 1275 WZW: 118 FW: 88 Pers. 106 ZZ 118 ND 114 3-3-3/83 Kasein BB	<b>FACT-ET</b> CH 120.1127.4206.2 3-3-2/83 G 99% +921 +15 -0.29 +27 -0.07 MIW: 123 GZW: 1381 WZW: 134 FW: 92 <b>GIANNA-ET</b> CH 120.0841.1027.2 DLC 84-85-82/87-84/85 1.L Ø 2L 10819 kg 4.08 % 3.75 % 137 LP 112 BD MIW: 117 GZW: 1134
<b>Scoglio Top TI GrischaSt HALLA</b> CH 120.0510.0438.2 CH 49% +574 +27 +0.05 +14 -0.08 Pers: 101 ZZ: 96 MIW: 116 GZW: 1078	<b>GRISCHA STAR</b> CH 120.1114.6625.9 3-2-3/83 G 99% +445 +21 +0.04 +17 +0.02 MIW: 116 GZW: 1108 WZW: 99 FW: 90 <b>HANNA</b> CH 120.0945.6949.7 DL DLC 82-77-82/84-80/82 1.L Ø 5L 8707 kg 4.26 % 3.36 % 91 LP 88 BD MIW: 118 GZW: 1037

**BS23/CH 04.23 50% +310 +13 +0.01 +14 +0.04 MIW: 112 GZW: 1184 FW: 89 ultima pesa:02.04.23 29.2 kg 4.79% 3.47%****CH Ext. 04.23 41% GN 112 Ra 108 Be 93 Fu 109 Eu 122****ZZ 33**

1C 1 1.11 287 Tage 6640kg 4.05 % 3.75 % 92 LP 92 BD AT4 ZZ 29

Proprietario: Peter Albert, Hauptstrasse 30a, 9464 Lienz

Allevatore: Scoglio Marco, Pian Caroggio, 6939 Mugena

**9 OLIVIA CH 120.1601.3895.4**data nasc.: 23.12.20 cop. 14.06.22 **ARCAS CH 120.1244.0173.5** DLC

<b>OBELIX</b> CH 120.1380.0476.2 OB GA 70% +707 +22 -0.09 +16 -0.12 Tö 5 MIW: 116 FIW: 98 GZW: 1105 WZW: 104 FW: 107 Pers. 112 ZZ 108 ND 106 5-5-5/94 Kasein AB	<b>ORELIO</b> CH 120.0675.3649.5 4-3-4/87 OB Z G 99% +455 +14 -0.06 +13 -0.04 MIW: 112 GZW: 1174 WZW: 116 FW: 114 <b>LENA</b> CH 120.0812.5702.4 OB DLC 91-92-85/88-88/88 4.L Ø 5L 6606 kg 3.86 % 3.09 % 77 LP 59 BD MIW: 126 GZW: 1112
<b>LAIKA</b> CH 120.1335.2142.4 Ø 3L 5931 4.00 2.84 73 LP 71 BD CH 62% -304 -32 -0.28 -34 -0.33 Pers: 107 ZZ: 112 MIW: 71 GZW: 932	<b>MINOR</b> CH 120.0534.8553.0 4-5-5/92 OB Z G 99% +278 +13 +0.02 +0 -0.14 MIW: 103 GZW: 1108 WZW: 108 FW: 107 <b>LORENA</b> CH 120.0974.2740.4 MIW: 67 GZW: 861

**BS23/A 04.23 33% -155 -21 -0.20 -21 -0.22 MIW: 82 GZW: 971 FW: 116****A Ext. 04.23 22% GN 101 Ra 116 Be 116 Fu 91 Eu 95**

Proprietario: Peter Albert, Hauptstrasse 30a, 9464 Lienz

Allevatore: Kamer Pius, Grossgiessen 4, 8717 Benken SG

**10 Roffler's Jeff CALGARY CH 120.1578.7973.0**

data nasc.: 03.11.20 parto: 18.12.22

DLC 80-81-77/79-77/79 1.L

Gantenbein's Gattuso JEFF CH 120.1408.4209.3 GA 76% +295 +3 -0.13 +17 +0.09	GATTUSO CH 120.1245.6019.7 3-3-3/83 G 98% +795 +11 -0.28 +27 -0.01 MIW: 121 GZW: 1106 WZW: 96 FW: 87
Tö 43 MIW: 112 FIW: 91 GZW: 1101 WZW: 98 FW: 80 Pers. 96 ZZ 95 ND 98 3-3-2/82 Kasein BB	JUPITA CH 120.1225.4228.7 DL DLC 97-92-95/97-96/96 3.L Ø 5L 9320 kg 4.13 % 3.64 % 108 LP 104 BD MIW: 108 GZW: 1101
Roffler's Phil CHRISTEL CH 120.1386.8134.5 DLC 86-79-77/84-84/82 1.L	PHIL CH 120.1179.5309.8 5-4-5/95 G 99% +734 +26 -0.05 +27 +0.02 MIW: 124 GZW: 1120 WZW: 102 FW: 82
Ø 1L 305 7684 4.05 3.42 94 LP 115 BD CH 57% +359 +25 +0.14 +10 -0.03 Pers: 92 ZZ: 80 MIW: 112 GZW: 1093	ADORA CH 120.1014.7984.9 *DL DLC 95-94-93/93-92/93 4.L Ø 6L 10160 kg 4.43 % 3.43 % 115 LP 108 BD MIW: 106 GZW: 1062

BS23/G 04.23 59% +273 +3 -0.11 +3 -0.09 MIW: 103 GZW: 1008 FW: 87 ultima pesa:02.04.23 24.1 kg 3.86% 2.82%

GA Ext. 04.23 53% GN 115 Ra 113 Be 101 Fu 104 Eu 126 ZZ 44

Produzione iniziale: 25.1kg 3.94% 2.89% ZZ 29 Kasein AB

Proprietario: Peter Albert, Hauptstrasse 30a, 9464 Lienz

Allevatore: Roffler-Flütsch Thomas, Überlandquartstrasse 18, 7214 Grüşch

**Animali da Svitto**

Venditore Armin Schatt, Feusisberg

**11 Schatt's Nice Gp NURIA CH 120.1547.8869.1**

data nasc.: 19.10.20 parto: 25.12.22

cop. 01.03.23

CLEM SG-ET CH 120.1613.2148.5

DLC 84-83-80/84-79/82 1.L

NICE GP FR 1537235547.7 G 91% +510 +0 -0.28 +19 +0.01	FACT-ET CH 120.1127.4206.2 3-3-2/83 G 99% +921 +15 -0.29 +27 -0.07 MIW: 123 GZW: 1381 WZW: 134 FW: 92
Tö 113 MIW: 113 FIW: 126 GZW: 1317 WZW: 121 FW: 84 Pers. 103 ZZ 124 ND 114 Kasein BB	JOLIE GP FR 1215116900.3 DLC FR 89-87-84-88 VG87 Ø 2L 8729 kg 4.38 % 3.90 % MIW: 110 GZW: 1176
Schatt's Vileno VERITA CH 120.1381.9057.1 Kasein BB	VILENO CH 120.0740.2882.2 2-2-3/82 G 99% +257 +3 -0.10 +11 +0.03 MIW: 108 GZW: 994 WZW: 100 FW: 95
G 68% +172 +13 +0.08 +9 +0.04 Pers: 110 ZZ: 105 MIW: 109 GZW: 1145	ELKE CH 120.0337.1559.6 *2DL DLC 94-92-94/96-96/95 6.L Ø 7L 10601 kg 4.39 % 3.61 % 114 LP 105 BD MIW: 96 GZW: 1016

BS23/G 04.23 61% +279 +9 -0.03 +17 +0.10 MIW: 113 GZW: 1313 FW: 83

ultima pesa:30.03.23 23 kg 3.7% 3.76%

GA Ext. 04.23 55% GN 116 Ra 100 Be 112 Fu 112 Eu 129 ZZ 19

Produzione iniziale: 22.7kg 3.93% 3.67% ZZ 131 Kasein BB

Allevatore + Prop.: Schatt Armin, Bleikenstrasse 2, 8835 Feusisberg



## 12 A. Flütsch's BS Levi Sg FANNY CH 120.1332.7852.6

data nasc.: 23.10.19 parto: 27.09.22

DLC 77-75-77/75-75/76 1.L

<b>LEVI SG-ET</b> CH 120.1352.9029.8 G 98% -173 +22 +0.42 +5 +0.16 Tö 665 MIW: 107 FIW: 106 GZW: 1106 WZW: 111 FW: 80 Pers. 109 ZZ 109 ND 99 2-2-2/82 Kasein AB	<b>PANDA-P-ET</b> CH 120.1162.3373.3 2-3-3/82 G 93% +776 +15 -0.22 +22 -0.07 MIW: 119 GZW: 992 WZW: 93 FW: 96
A. Flütsch's BS Jongl TOSKANA CH 120.0757.2138.8 * DLC 85-85-77/84-84/83 1.L Ø 9L 6566 3.51 3.03 79 LP 75 BD CH 68% -462 -36 -0.25 -23 -0.10 Pers: 91 ZZ: 91 MIW: 77 GZW: 901	<b>LEILA</b> CH 120.0979.2237.4 DLC 96-96-94/97-92/95 3.L Ø 5L 11218 kg 4.42 % 3.84 % 126 LP 95 BD MIW: 114 GZW: 1176
	<b>JONGLEUR-ET</b> CH 120.0270.9369.3 5-5-5/96 G 99% -364 -26 -0.16 -17 -0.06 MIW: 83 GZW: 979 WZW: 97 FW: 91
	<b>KYRA</b> CH 120.0155.0275.6 *DL DLC 88-91/92-92/91 3.L Ø 9L 6473 kg 3.54 % 3.13 % 78 LP 80 BD MIW: 63 GZW: 764

**BS23/CH 04.23 48% -110 -11 -0.09 -11 -0.10 MIW: 90 GZW: 953 FW: 87 ultima pesa:19.04.23 24.7 kg 4.08% 3.45%**

**CH Ext. 04.23 46% GN 100 Ra 105 Be 97 Fu 101 Eu 97 ZZ 106**

1. Lakt 2.11 221 Tage 5747kg 3.92 % 3.18 % 93 BD AT4 ZZ 87

Proprietario: Beeli Gian, Via Starviz 3, 7152 Sagogn

Allievatore: Flütsch-Puck Andreas, Gafierstrasse 7, 7246 St. Antönien

## 13 MEDINA CH 120.1543.3026.5

data nasc.: 20.06.20 parto: 15.09.22 cop. 16.02.23

**TAIFUN CH 120.1500.4056.4**

DLC

<b>Scherma Arrow BAYS-ET</b> CH 120.1145.9349.5 G 99% +690 +39 +0.15 +38 +0.19 Tö 1317 MIW: 134 FIW: 96 GZW: 1245 WZW: 124 FW: 97 Pers. 109 ZZ 118 ND 103 2-2-3/83 Kasein BB	<b>ARROW</b> IT 21002045985.3 G 99% +99 +17 +0.18 +20 +0.23 MIW: 117 GZW: 1082 WZW: 101 FW: 96
	<b>BEST</b> CH 120.0825.6879.2 DLC 90-93-92/97-95/93 3.L Ø 3L 12536 kg 4.83 % 3.79 % 137 LP 90 BD MIW: 138 GZW: 1318
<b>MARA</b> CH 120.1212.6172.1 DLC 92-96-91/96-94/93 3.L Ø 4L 8966 4.01 3.65 109 LP 106 BD CH 66% +295 +12 +0.00 +15 +0.06 Pers: 106 ZZ: 95 MIW: 113 GZW: 1148	<b>MAARTEN</b> CH 120.1005.0852.6 3-2-3/83 G 92% +6 +2 +0.02 +3 +0.04 MIW: 102 GZW: 1025 WZW: 98 FW: 95
	<b>JAMBA</b> CH 120.1031.5684.7 *DL DLC 86-87-80/87-85/85 1.L Ø 5L 8449 kg 3.85 % 3.52 % 100 LP 109 BD MIW: 100 GZW: 1080

**BS23/CH 04.23 48% +219 +14 +0.07 +17 +0.13 MIW: 114 GZW: 1131 FW: 99 ultima pesa:19.04.23 19.1 kg 4.39% 3.89%**

**A Ext. 04.23 37% GN 112 Ra 107 Be 115 Fu 107 Eu 117 ZZ 16**

1. Lakt 2.03 233 Tage 4361kg 4.38 % 3.55 % 93 BD AT4 ZZ 27

Proprietario: Beeli Gian, Via Starviz 3, 7152 Sagogn

Allievatore: Kälin Roland, Euthalerstrasse 39, 8844 Euthal

**14 Steier's Sinatra SINATRA CH 120.1404.6715.9**data nasc.: 02.12.17 parto: 27.10.22 cop. 02.01.23 **TAIFUN CH 120.1500.4056.4** DLC 78-80-80/82-83/80 1.L

<b>GS SINATRA-ET</b> AT 410015229.2 G 96% +1202 +48 -0.01 +37 -0.06	SEASIDEBLOOM US 68144448.3 GI 92% +1399 +34 -0.28 +34 -0.18 MIW: 132 GZW: 1246 WZW: 115 FW: 95
Tö 232 MIW: 136 FIW: 117 GZW: 1358 WZW: 128 FW: 94 Pers. 111 ZZ 115 ND 109 Kasein AB	RIANA AT 647066922.6 DLC AT 82 83 85 85 GP84 Ø 3L 9025 kg 3.95 % 3.55 % MIW: 123 GZW: 1204
Steier's Vasir VANASA CH 120.0837.2958.1 *2DL DLC 93-90-92/91-90/92 3.L	VASIR DE 936949086.7 G 99% +1308 +75 +0.28 +41 -0.06 MIW: 144 GZW: 1165 WZW: 103 FW: 107
Ø 9L 9705 3.82 3.17 110 LP 99 BD G 76% +585 +24 +0.01 +9 -0.15 Pers: 90 ZZ: 114 MIW: 112 GZW: 1104	ALPINA CH 120.0325.4256.8 F*2DL DLC 90-91-93/94-92/92 10.L Ø 10L 7838 kg 3.48 % 3.51 % 91 LP 100 BD MIW: 85 GZW: 973

**BS23/G 04.23 72% +801 +28 -0.06 +24 -0.06 MIW: 123 GZW: 1252 FW: 98 ultima pesa:19.04.23 27.1 kg 3.94% 3.48%****G Ext. 04.23 62% GN 98 Ra 93 Be 106 Fu 102 Eu 98**

Kasein AB

1A 8 2.10 305 Tage 6164kg 3.81 % 3.23 % 82 LP 79 BD AT4 ZZ 14

**ZZ 11****2A 8 3.10 305 Tage 6547kg 3.48 % 3.19 % 84 LP 79 BD AT4 ZZ 124**

Ø 2L 6356kg 3.64 % 3.21 % 83 LP 79 BD ZZ 71

Proprietario: Beeli Gian, Via Starviz 3, 7152 Sagogn

Allevatore: Steier-Steiner Luzi, Alla Riva, 7460 Savognin

**15 Langenhard's Holdrio HOOTERS CH 120.1534.8178.4**

data nasc.: 18.09.20

DLC

<b>Manser's Arrow HOLDRIO</b> CH 120.1398.8113.3 G 97% -306 -31 -0.27 -16 -0.08	ARROW IT 21002045985.3 G 99% +99 +17 +0.18 +20 +0.23 MIW: 117 GZW: 1082 WZW: 101 FW: 96
Tö 671 MIW: 83 FIW: 105 GZW: 979 WZW: 104 FW: 72 Pers. 111 ZZ 111 ND 111 2-2-2/82 Kasein BB	HANNA CH 120.0963.0890.2 *2DL DLC 96-94-92/97-96/95 4.L Ø 6L 11645 kg 4.19 % 3.47 % 121 LP 100 BD MIW: 87 GZW: 921
Langenhard's Vigor AMORE CH 120.1048.5772.9 *DL DLC 91-87-90/95-91/91 4.L	VIGOR-ET US 195618.4 G 99% +139 +0 -0.08 +4 -0.01 MIW: 103 GZW: 1074 WZW: 107 FW: 100
Ø 6L 8215 4.53 3.76 87 LP 99 BD CH 69% -849 -7 +0.40 -14 +0.23 Pers: 95 ZZ: 115 MIW: 88 GZW: 990	ASPEN CH 120.0669.5382.8 DLC 93-93-94/97-96/95 3.L Ø 6L 9746 kg 4.32 % 3.39 % 103 LP 99 BD MIW: 88 GZW: 953

**BS23/A 04.23 42% -578 -19 +0.07 -15 +0.08 MIW: 85 GZW: 981 FW: 88****A Ext. 04.23 38% GN 112 Ra 99 Be 104 Fu 117 Eu 120**

Proprietario: Beeli Gian, Via Starviz 3, 7152 Sagogn

Allevatore: Hofer / Kündig, Unterdorf 6A, 8486 Rikon im Tösstal



**16 b.f. Top TI Narson GANASA CH 120.1615.5517.0**

data nasc.: 12.03.21

cop. 27.11.22 **RAMI CH 120.1060.8711.7**

DLC

Heller BS Narcotic NARSON B14C CH 120.1347.6648.0 G 93% +256 +3 -0.10 +17 +0.10 Tö 159 MIW: 112 FIW: 117 GZW: 1248 WZW: 117 FW: 90 Pers. 104 ZZ 117 ND 109 3-3-3/83 Kasein AB	NARCOTIC-ET IT 14990118023.7 G 95% -6 -8 -0.10 +16 +0.23 MIW: 109 GZW: 1219 WZW: 120 FW: 89
b.f. Top TI Anibal COREA B2C CH 120.1269.8104.4 DLC 76-72-82/82-82/79 1.L Kasein AB Ø 2L 5445 3.78 3.60 78 LP 87 BD G 75% +217 +7 -0.02 +11 +0.05 Pers: 93 ZZ: 103 MIW: 109 GZW: 1070	ANIBAL-ET CH 120.0830.2516.4 5-4-4/92 G 99% +382 +20 +0.06 +17 +0.05 MIW: 116 GZW: 1167 WZW: 111 FW: 97
	GALILEA CH 120.0788.5947.7 *DL DLC 84-82-82/83-83/83 1.L Ø 5L 12359 kg 4.20 % 3.43 % 131 LP 94 BD MIW: 121 GZW: 1166
	REGA CH 120.0685.7918.7 *2DL DLC 82-83-83/85-82/83 1.L Ø 6L 8647 kg 3.42 % 3.37 % 105 LP 84 BD MIW: 98 GZW: 920

**BS23/GA 04.23 63% +616 +9 -0.21 +23 +0.02 MIW: 118 GZW: 1189 FW: 87****GA Ext. 04.23 56% GN 107 Ra 100 Be 110 Fu 112 Eu 108**

Kasein AB

Proprietario: Beeli Gian, Via Starviz 3, 7152 Sagogn

Allevatore: Boggini Pio, Capèss 1, 6719 Aquila

**17 DANIELA CH 120.1571.2726.8**

data nasc.: 15.04.21

cop. 19.02.23 **DESIGNER CH 120.0944.4229.5**

DLC

Jolahofs Superstar DREAMER-ET CH 120.0697.4255.9 G 89% +122 +23 +0.25 +21 +0.23 Tö 179 MIW: 118 FIW: 117 GZW: 1297 WZW: 122 FW: 96 Pers. 109 ZZ 106 ND 109 3-3-3/83 Kasein BB	SUPERSTAR IT 14990127961.0 G 99% +568 +26 +0.04 +36 +0.22 MIW: 130 GZW: 1237 WZW: 108 FW: 94
GERDA CH 120.1222.6073.0 DLC 80-82-83/84-81/82 1.L Kasein BB Ø 4L 9445 3.94 3.77 107 LP 96 BD G 75% +244 +21 +0.15 +22 +0.19 Pers: 96 ZZ: 107 MIW: 119 GZW: 1186	DAVIDE CH 120.0697.4117.0 DLC 85-86-85/85-81/85 1.L Ø 3L 11730 kg 4.50 % 3.72 % 140 LP 80 BD MIW: 135 GZW: 1343
	GUSTI-ET CH 120.0768.2708.9 3-3-2/83 G 99% +510 +38 +0.23 +24 +0.08 MIW: 124 GZW: 958 WZW: 90 FW: 105
	VABIOLA CH 120.0965.9429.9 *2DL DLC 89-79-91/92-95/90 5.L Ø 8L 9452 kg 3.77 % 3.60 % 101 LP 92 BD MIW: 101 GZW: 1095

**BS23/GA 04.23 63% +311 +21 +0.11 +22 +0.15 MIW: 119 GZW: 1262 FW: 101****GA Ext. 04.23 56% GN 115 Ra 105 Be 100 Fu 109 Eu 130**

Kasein BB

Proprietario: Beeli Gian, Via Starviz 3, 7152 Sagogn

Allevatore: Oberlin Marcel, Röschli, 8856 Tuggen

**18 BLUME CH 120.1456.3458.7**data nasc.: 17.12.19 parto: 26.11.22 cop. 25.02.23 **X-BORMIO CH 120.1510.3273.5 X** DLC

<b>Lötscher's BS Blooming BOND</b> CH 120.1259.7430.6 A 61% +277 +18 +0.09 +15 +0.07	<b>BLOOMING-ET</b> CH 120.0825.6880.8 3-3-2/83 Z G 99% +449 +11 -0.10 +29 +0.18 MIW: 122 GZW: 1140 WZW: 97 FW: 94
Tö 13 MIW: 114 FIW: 91 GZW: 1059 WZW: 94 FW: 84 Pers. 93 ZZ 84 ND 99 4-3-4/85	<b>NOEMI</b> CH 120.0910.3498.1 *2DL DLC 95-96-91/93-88/93 3.L Ø 8L 11506 kg 3.95 % 3.30 % 126 LP 107 BD MIW: 100 GZW: 996
<b>ADORA</b> CH 120.1210.9803.7	<b>ANIBAL-ET</b> CH 120.0830.2516.4 5-4-4/92 G 99% +382 +20 +0.06 +17 +0.05 MIW: 116 GZW: 1167 WZW: 111 FW: 97
Ø 3L 7619 4.05 3.25 89 LP 83 BD CH 63% +327 +4 -0.13 +4 -0.10 Pers: 101 ZZ: 113 MIW: 104 GZW: 1020	<b>FLORA</b> CH 120.1137.1477.8 DLC 81-81-79/82-81/81 1.L Ø 2L 5979 kg 4.27 % 3.37 % 77 LP 81 BD MIW: 89 GZW: 837

**BS23/CH 04.23 31% +290 +13 +0.02 +13 +0.04 MIW: 112 GZW: 1068 FW: 91 ultima pesa:22.03.23 35.5 kg 3.56% 3.08%**  
**A Ext. 04.23 22% GN 107 Ra 110 Be 102 Fu 109 Eu 107 ZZ 30**

Produzione iniziale: 35.6kg 3.91% 3.39% ZZ 93

Proprietario: Kuhrerhof AG, Reitnauerweg 14, 7000 Chur

Allevatore: Zimmermann Armin, Quadra 7, 7408 Cazis

**19 Schmidt's Barca BERTHA CH 120.1508.6585.3**

data nasc.: 01.09.20 parto: 10.10.22 DLC

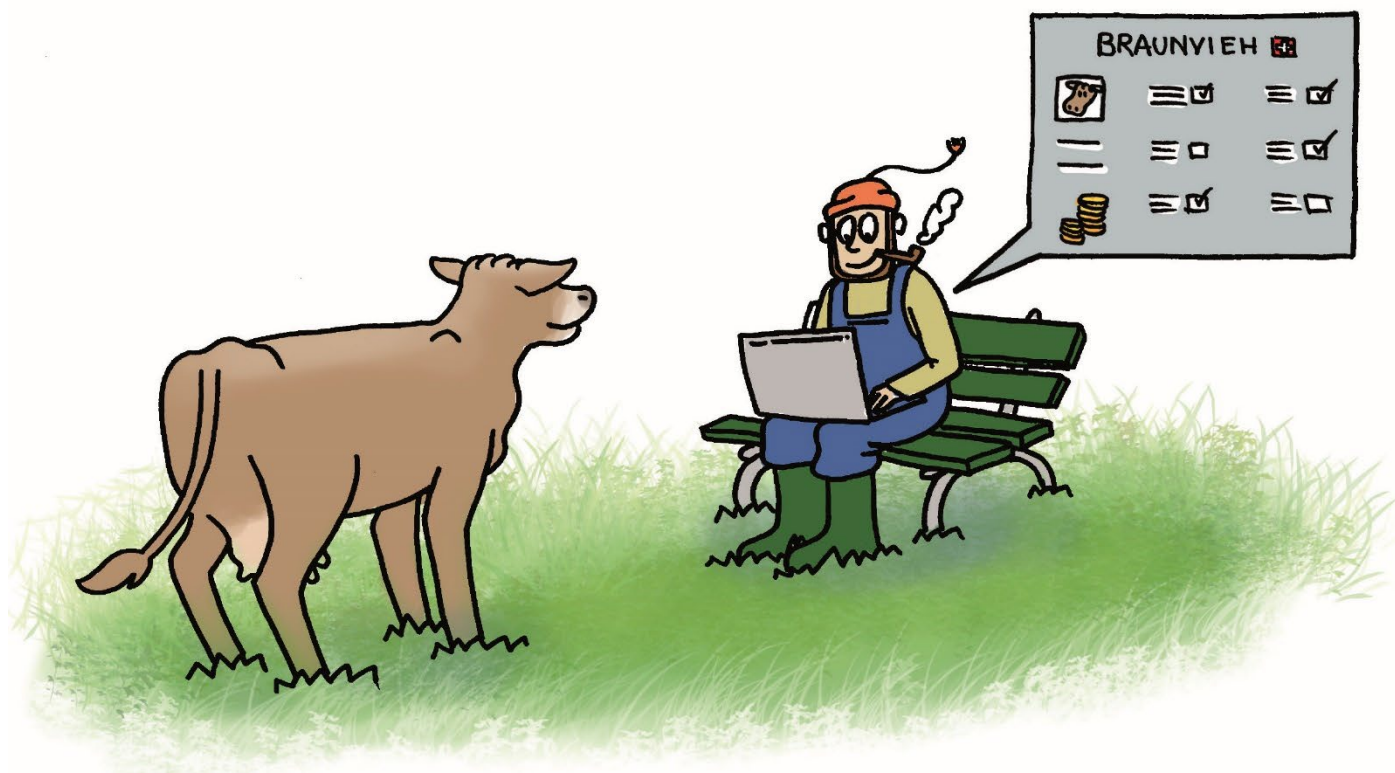
<b>H. Scherrer's Haegar BARCA</b> CH 120.1262.1359.6 G 97% +507 +38 +0.24 +27 +0.13	<b>HAEGAR</b> CH 120.1185.8292.1 3-3-2/83 G 99% +736 +19 -0.14 +22 -0.05 MIW: 120 GZW: 1152 WZW: 108 FW: 84
Tö 749 MIW: 126 FIW: 105 GZW: 1223 WZW: 109 FW: 94 Pers. 105 ZZ 95 ND 122 3-3-3/83 Kasein AB	<b>BONA</b> CH 120.1101.4185.0 DL DLC 86-86-87/91-86/88 2.L Ø 5L 8421 kg 4.20 % 3.63 % 91 LP 95 BD MIW: 113 GZW: 1184
<b>Schmidt's Dally DORA</b> CH 120.1124.9070.3 *DL DLC 86-93-94/93-85/90 3.L Kasein AB	<b>DALLY-ET</b> US 197305.1 G 99% +179 +5 -0.03 +15 +0.12 MIW: 111 GZW: 1108 WZW: 110 FW: 114
Ø 5L 7397 3.63 3.34 86 LP 85 BD G 75% -275 -23 -0.17 -15 -0.08 Pers: 92 ZZ: 97 MIW: 85 GZW: 919	<b>RUMBA</b> CH 120.0549.4235.3 *DL Ø 2L 8137 kg 3.59 % 3.21 % 104 LP 85 BD MIW: 78 GZW: 800

**BS23/G 04.23 66% -146 +4 +0.13 +1 +0.09 MIW: 101 GZW: 1053 FW: 103 ultima pesa:22.03.23 20.7 kg 4.37% 3.49%**  
**GA Ext. 04.23 58% GN 111 Ra 104 Be 110 Fu 111 Eu 114 ZZ 131**

Produzione iniziale: 23.9kg 3.98% 3.52% ZZ 52

Proprietario: Kuhrerhof AG, Reitnauerweg 14, 7000 Chur

Allevatore: Schmidt Jachen Andri, Prade 242 F, 7554 Sent



## Piazza di mercato online

«Acquistare animali – semplicemente!»

- ✓ nuove offerte in continuazione
- ✓ in tutte le categorie di prezzo
- ✓ da tutte le regioni
- ✓ online e sempre attuali
- ✓ ora perfino con foto  
e tanto altro...

**Braunvieh Schweiz**  
Chamerstrasse 56  
CH-6300 Zugo  
Tel. 041 729 33 11  
[www.braunvieh.ch](http://www.braunvieh.ch)



**BRAUNVIEH** 

## Die beste Genetik für Ihre Herde

### **PETE-ET (BS)**

Herrenhof BS Calvin PETE-ET  
Calvin x Blooming x Vigor

- # Euter
- # Exterieur
- # Funktionalität



*Tellis Pete PIPPER*

### **GUY (BS)**

Scherma Noro Sg GUY  
Noro Sg x Balzac x Simbaboy

- # Milch
- # Funktionalität
- # Exterieur



*Mutter:  
Scherma Balzac GRIOTTE*

### **CAVRAL-ET (BS)**

Jolahofs Lover CAVRAL-ET  
Lover x Bender x Simbaboy

- # Exterieur
- # Milch
- # Eiweiss



*Mutter: GoldHill Bender CALANA SG-ET*